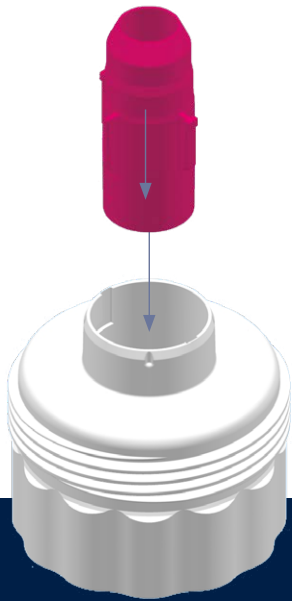


# BWT OsmoCare



## The protector

### Efficient protection for your BWT reverse osmosis system

Compact reverse osmosis systems from BWT offer top performance in very little space. Whether for professional coffee machines, combi steamers, ovens or dishwashers, BWT bestaqua ROC systems always provide the best water for every use. BWT reverse osmosis systems are also highly efficient, easy to install, reliable and have a high yield. The BWT OsmoCare System ensures high efficiency long-term.

Thanks to the high yield of the BWT reverse osmosis membrane a very high concentration of minerals forms in the concentrate – about twice the mineral content of raw water. Under certain circumstances, this can cause deposits to form in the concentrate pipes. Over time, these deposits can damage the membrane and reduce salt retention. Regular use of OsmoCare will safely avoid troublesome deposits, ensuring a flawless and constantly highly efficient process.

#### BWT Filter Head

Is installed in all systems that are compatible with BWT OsmoCare.

2

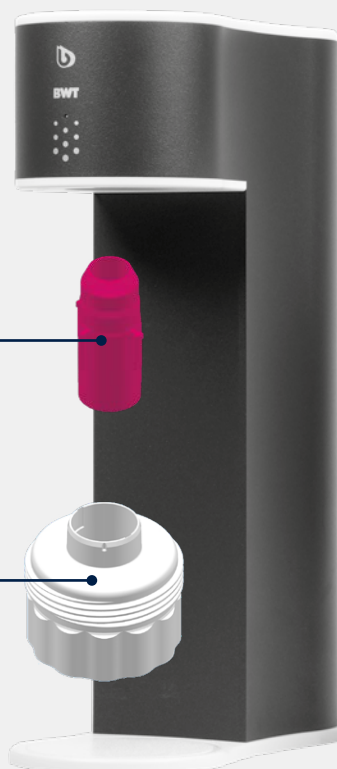
#### BWT OsmoCare Tab

With integrated descaling tablet. Required for every descaling process.

1

#### BWT OsmoCare Adapter

Simply and safely holds BWT OsmoCare Tabs.



### ORDER NUMBER

		ORDER NO.
1	BWT OsmoCare Adapter	125627411
2	BWT OsmoCare TAB 4-pack	125558967

### TECHNICAL DATA

Operating pressure	bar	2 to 12
Inlet water temperature (min./max.)	°C	+4 to +30
Ambient temperature (min./max.)	°C	+4 to +40

# BWT OsmoCare

## BWT OsmoCare – for universal use!

Thanks to the special structure of the adapter, OsmoCare can be used on all compact BWT ROC reverse osmosis systems. It will clean all the concentrate pipes, but will not affect the area behind the membrane, or any downstream BWT filter cartridges used for adding minerals (BWT bestaqua 14 ROC Coffee/BWT bestbarista 14 ROC Coffee) or for removing minerals (BWT bestaqua 14 ROC ULTRA).

### BWT OsmoCare - unique benefits!

- Ensures your compact BWT ROC reverse osmosis systems work to their full potential
- Easy and safe to use
- Avoids unnecessary service calls
- Can be used with all compact BWT ROC reverse osmosis systems

## TYPICAL APPLICATION AREAS

BWT REVERSE OSMOSIS SYSTEMS	COFFEE	OVENS	COMBI STEAMERS	DISHWASHERS	LABS	ORDER NO.
BWT bestaqua 14 ROC		✓	✓	✓		RS81M01A00
BWT bestaqua 16 ROC		✓	✓	✓		125255111
BWT bestaqua 14 ROC Coffee	✓					RS82M01A00
BWT bestbarista 14 ROC Coffee	✓					125632136
BWT bestaqua 14 ROC ULTRA					✓	125504752

## CLEANING INSTRUCTIONS



Turn off the unit. Unscrew the old membrane cartridge from the System.



Remove foil from the OsmoCare Tab (insert).



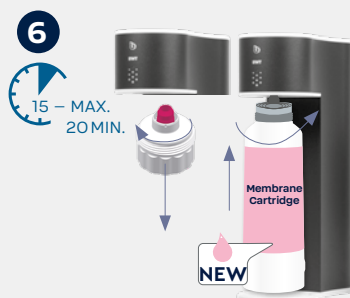
Insert the OsmoCare Tab into the OsmoCare Adapter. Note the arrow on the insert!



Screw in the OsmoCare Adapter with the insert into the system.



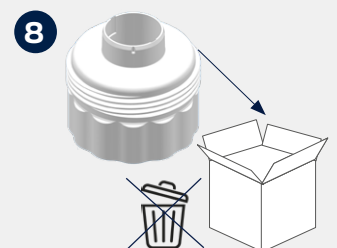
Start the unit's descaling programme. If the system does not have a descaling programme, rinse the system for 3 seconds in operating mode and then switch off for 20 seconds. Repeat these steps till the concentrate line flushed out about 3 l pink coloured solution. The procedure might take about 20 min.



After the completion of the procedure unscrew the OsmoCare Adapter from the system and screw in a new Membrane cartridge.



Dispose of insert.



Rinse the OsmoCare Adapter and store it for future use.

If the scaling of the unit is so severe that the concentrate line cannot expel any water, the product cannot be used. Please contact a BWT service technician.

## MANUFACTURER: SALES:

**BWT Holding GmbH:**  
Walter-Simmer-Str. 4  
5310 Mondsee, Austria  
bwt-wam.com

**BWT water+more  
Deutschland GmbH:**  
info@water-and-more.de  
Tel.: +49 611 58019-0